

—
BLOQ

creative
carpet tiles



THE BINARY
SCULPTURE

—
BLOQ

creative
carpet tiles



© Rijksmuseum, Genemuiden

Our story

Being part of Betap, BLOQ can build on more than **100 years of experience** in the flooring sector. Betap grew from a local manufacturer of rush mats in 1918 to an internationally renowned carpet manufacturer.

Working with some of the most reputable architects, designers and commercial carpet partners, Betap's **high-traffic commercial carpet** is used across the world in prestigious office buildings, hotels, universities, museums and various leisure applications. Betap is your partner of choice for commercial carpet.



© Het Rijksmuseum, Frans Hals

Nice to know

The colour ochre in the BLOQ logo refers to the rushes and the colour palette of the Golden Age in Holland.



High-end production line

Group Betap is an **innovative carpet manufacturer** in Genemuiden (The Netherlands) with a vertically integrated production line for tufted and non-woven floor coverings, as well as an own yarn production line.

With BLOQ, we are developing and producing **creative carpet tiles** that comply with the stringent regulations for the commercial market. We offer high-performance tiles focused on office projects, that are sound absorbing and have the best results in fire safety. Our products are also produced following the strictest standards in sustainability.



The Binary

SCULPTURE is part of The Binary collection, a design collection group existing of **five contemporary patterns**, built from a light and dark colour (binary). Living and working environments have never been so close.

Meet The Binary family: FLOW, BALANCE, RENEGADE, SCULPTURE and GRAIN. The Binary collections match perfectly with our The Workplace collection, which uses the same colours.



FLOW



BALANCE



RENEGADE



SCULPTURE



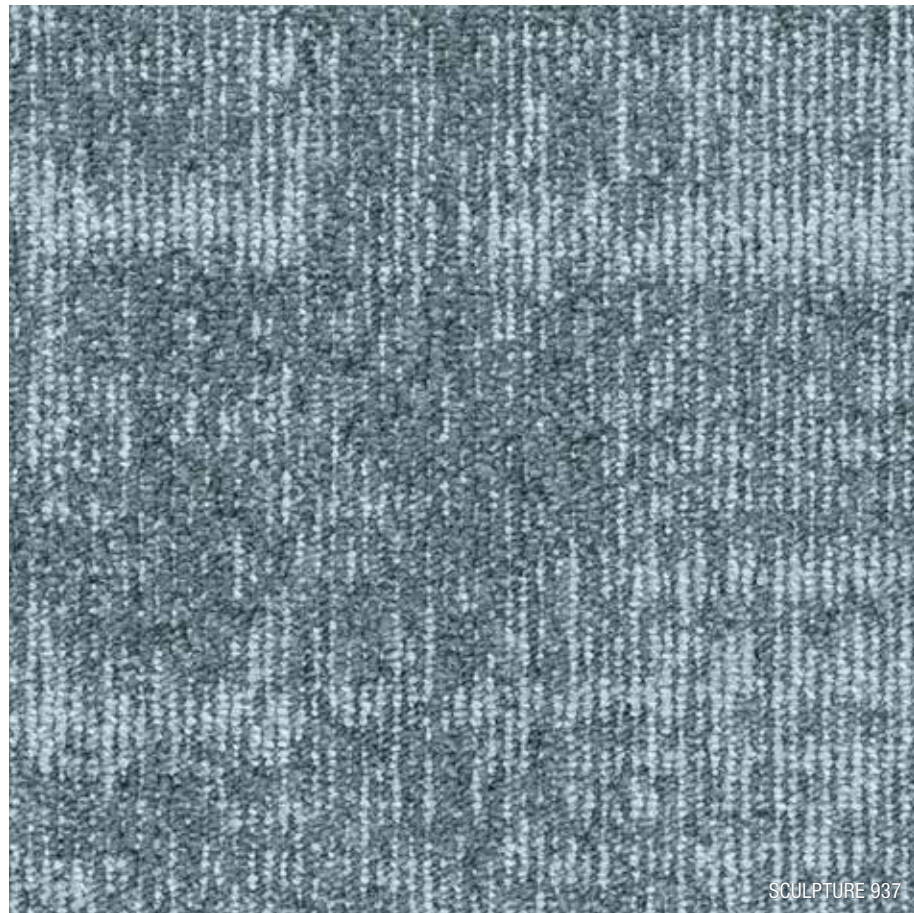
GRAIN

Sculpture →

*Mixing two yarns:
a light & dark colour*



THE BINARY
SCULPTURE



Inspiration
is everywhere

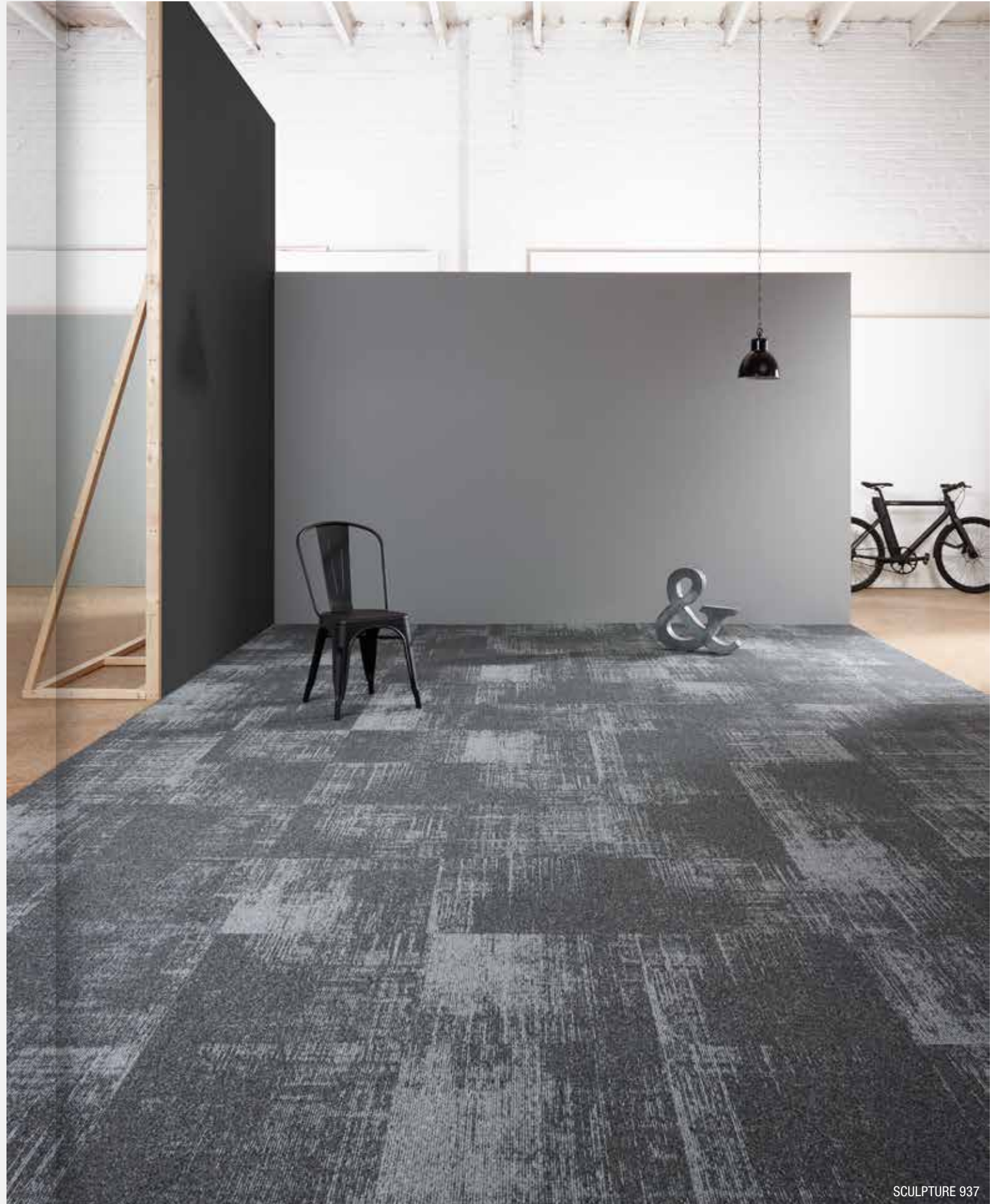
Pattern of concrete



Two shades

SCULPTURE is a tile of 50 x 50 cm and is inspired by the **unpredictable pattern of concrete**. Contemporary vibes that blend perfectly with an industrial style.

Never dull, always inspiring.



SCULPTURE 937

Light or dark?



BALANCE 921



BALANCE 937

Colour range

SCULPTURE comes in **18 matching colours**. Use the colours pure and go for one colour tone, or play with colours and mix according to your taste.

Tone on tone or bright and bold? SCULPTURE has it all.



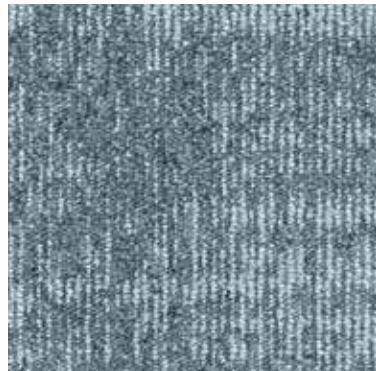
911 MOUSE



907 IRON



111 TRUFFLE



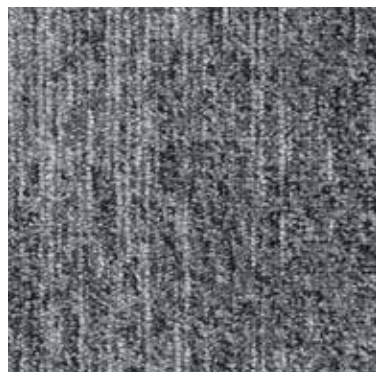
937 ASH



921 ELEPHANT



123 GREIGE



942 SHADOW



946 GRAPHITE



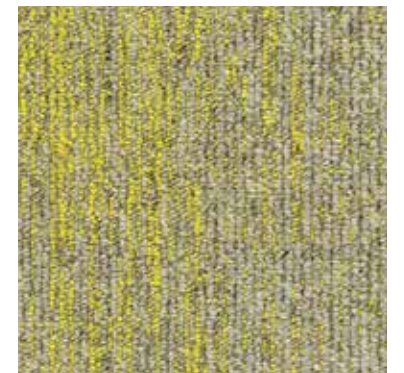
135 NUTMEG



130 SAHARA



218 PAPRIKA



125 FLAX



124 WALNUT



410 FUCHSIA



617 MOSS



812 COFFEE



522 ATLANTIC



530 SEA



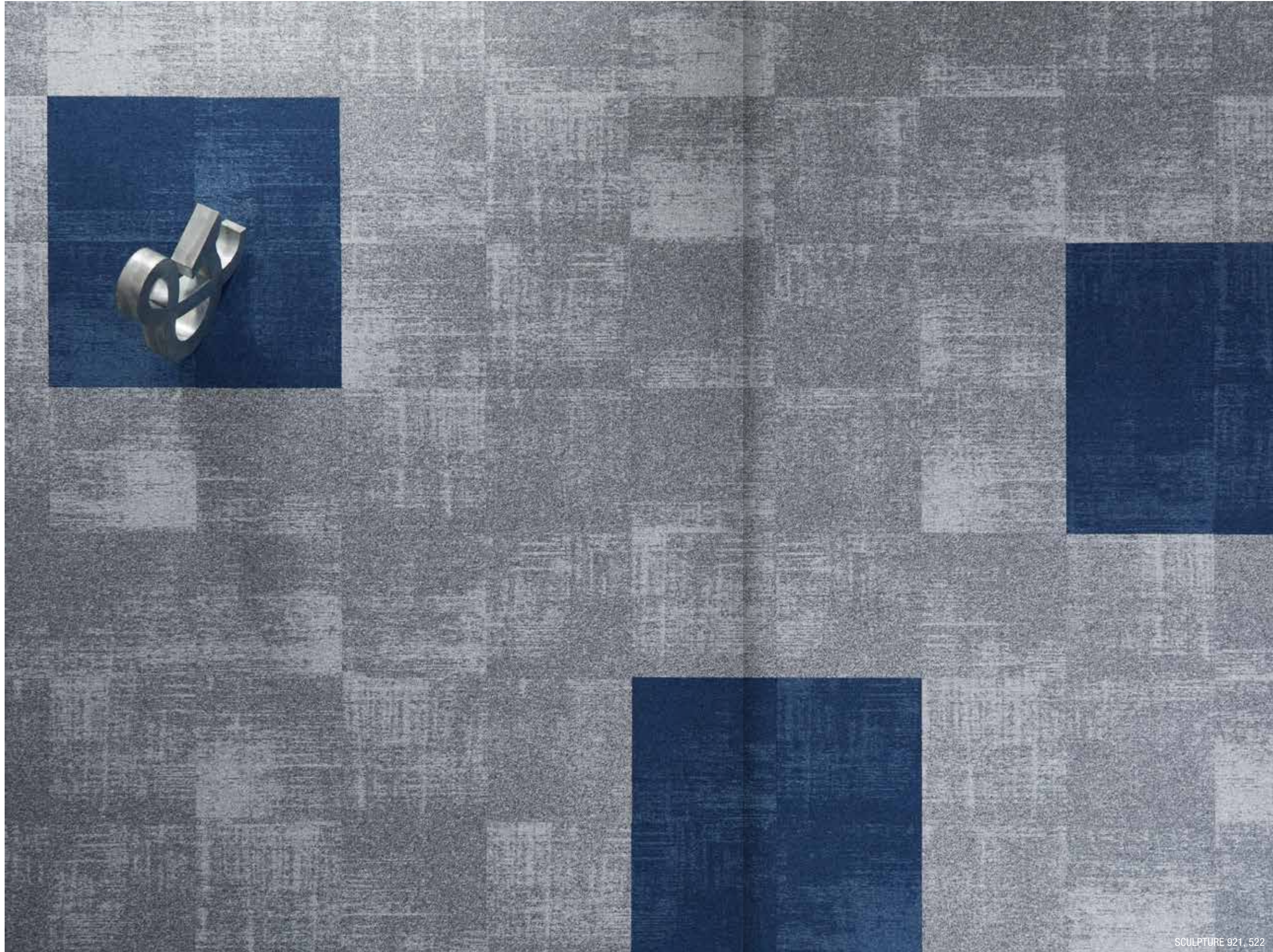
SCULPTURE 124

Pure or mixed

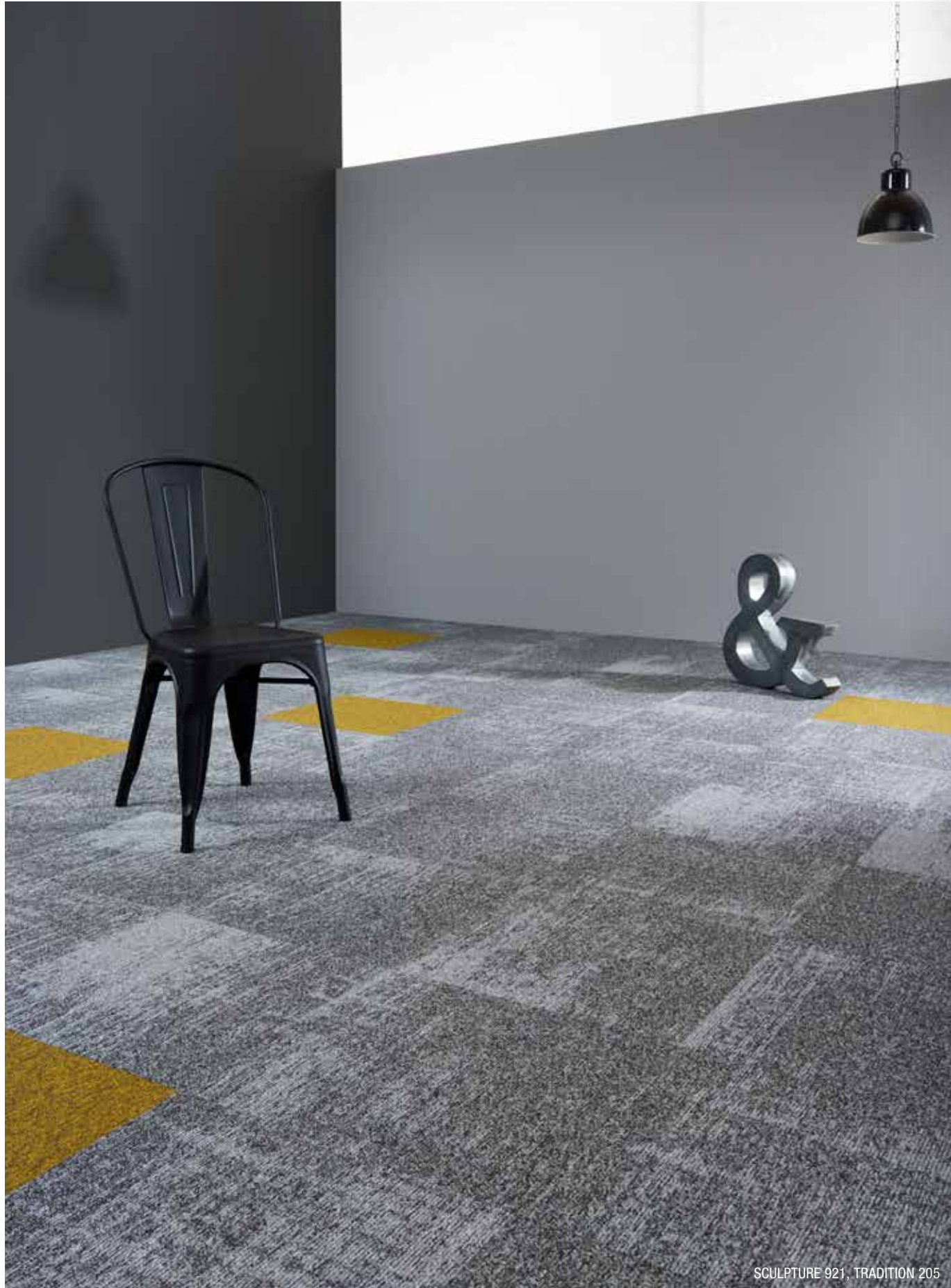
Use the colours pure in **one colour tone or dare to mix** with other tones. Soft hues stimulate a homely feeling at work, current colours meet today's trends.



SCULPTURE 111, 124



SCULPTURE 921, 522



Combined with Tradition

Highlights

BITBACK

BLOQ uses **Bitback**, Modified Bitumen, which consists of 70% recycled content.

Tiles made with Bitback deliver great acoustic results such as **high sound absorption and insulation**, as well as **noise reduction**. Therefore carpets made with this sustainable backing contribute substantially to personal health and comfort.



SOLUTION DYED YARNS

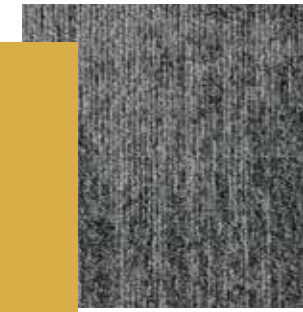
BLOQ uses 100% Polyamide 6 Solution Dyed Nylon from **Aquafil**, the best and leading supplier for carpet manufacturers. Solution dyed means **better colour fastness** and the best results to light and water.

LIGHT REFLECTANCE VALUES

Light Reflectance Value (LRV) is a scale that measures visible and usable light reflected from an illuminated surface. The percentage identifies how much light a colour reflects or absorbs. 0% reflects no visible light, 100% reflects all light.

| COLOUR | LRV _{av} | L |
|--------|-------------------|-------|
| 111 | 29.87 | 61.55 |
| 123 | 15.46 | 46.26 |
| 124 | 18.62 | 50.24 |
| 125 | 14.38 | 44.77 |
| 130 | 29.90 | 61.57 |
| 135 | 12.78 | 42.43 |
| 218 | 10.07 | 37.97 |
| 410 | 6.19 | 29.89 |
| 522 | 4.98 | 26.67 |

| COLOUR | LRV _{av} | L |
|--------|-------------------|-------|
| 530 | 7.58 | 33.08 |
| 617 | 7.89 | 33.76 |
| 812 | 9.48 | 36.90 |
| 907 | 21.26 | 53.23 |
| 911 | 21.14 | 53.10 |
| 921 | 17.84 | 49.30 |
| 937 | 11.36 | 40.17 |
| 942 | 8.47 | 34.95 |
| 946 | 4.96 | 26.61 |



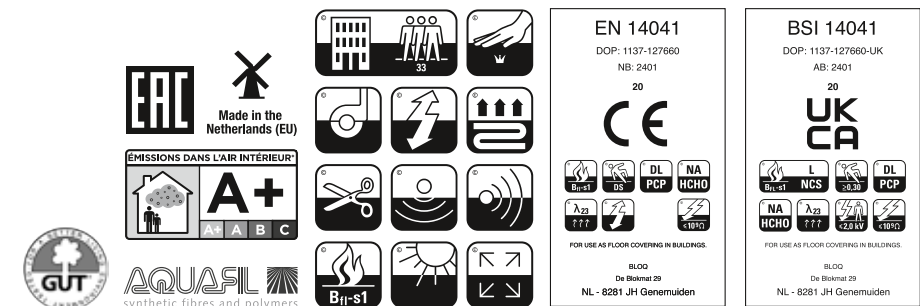
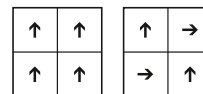
THE BINARY SCULPTURE

SPECIFICATIONS

| | |
|-------------------------------|--|
| TYPE OF MANUFACTURE | Tufted Patterned Loop Pile 1/10" |
| ISO 2424 | |
| PILE FIBER COMPOSITION | 100% Polyamide 6 |
| ISO 2424 | Solution Dyed Nylon made by Aquafil |
| SECONDARY BACKING | Bitback, Modified Bitumen |
| ISO 2424 | 70% Recycled Content |
| DIMENSION | 50 x 50 cm |
| EN ISO 24342 | |
| PILE WEIGHT | 650 g/m ² |
| ISO 8543 | |
| SURFACE PILE WEIGHT | 380 g/m ² |
| ISO 8543 | |
| TOTAL WEIGHT | 4 400 g/m ² |
| ISO 8543 | |
| TOTAL THICKNESS | 6.9 mm |
| ISO 1765 | |
| PILE HEIGHT | 3.8 mm |
| ISO 1766 | |
| PILE DENSITY | 0.100 g/m ³ |
| ISO 8543 | |
| NUMBER OF TUFTS | 152 000 /m ² |
| ISO 1763 | |
| DIMENSIONAL STABILITY | ≤ 0.2% |
| ISO 2551 | |
| NUMBER OF COLOURS | 18 |
| PACKAGING | Box: 20 tiles / 5 m ² Pallet: 200 m ² |

PERFORMANCE

| | |
|---------------------------------|--|
| CLASSIFICATION | 33 |
| EN 1307 | |
| LUXURY RATING | LC1 |
| EN 1307 | |
| CASTOR CHAIR RATING | A: Intensive use |
| EN 985 | |
| FIRE CLASSIFICATION | B _f -s1 |
| EN 13501-1 | |
| IMPACT SOUND INSULATION | ΔL _w : 27 dB |
| EN ISO 10140-3 | |
| SOUND ABSORPTION | Frequency Hz 125 250 500 1000 2000 4000 |
| EN ISO 354 | α _s 0.01 0.03 0.09 0.19 0.35 0.39 |
| NOISE REDUCTION | α _w : 0.20 |
| EN ISO 354 | |
| PERMANENT ANTISTATIC | ≤ 2 kV |
| ISO 6356 | |
| TRANSVERSAL RESISTANCE | ≤ 1 X 10 ⁹ Ohm |
| ISO 10965 | |
| THERMAL RESISTANCE | 0.084 m ² K/W |
| ISO 8302 | |
| COLOUR FASTNESS TO LIGHT | ≥ 7 |
| EN ISO 105-B02 | |
| COLOUR FASTNESS TO WATER | ≥ 4 |
| EN ISO 105-E01 | |
| RUBBING FASTNESS | ≥ 4 |
| EN ISO 105-X12 | |
| GUT N° PRODIS | 15F32FA9 |



All rights reserved to alter technical specifications.



Part of **betap**[®]

www.bloq.nl